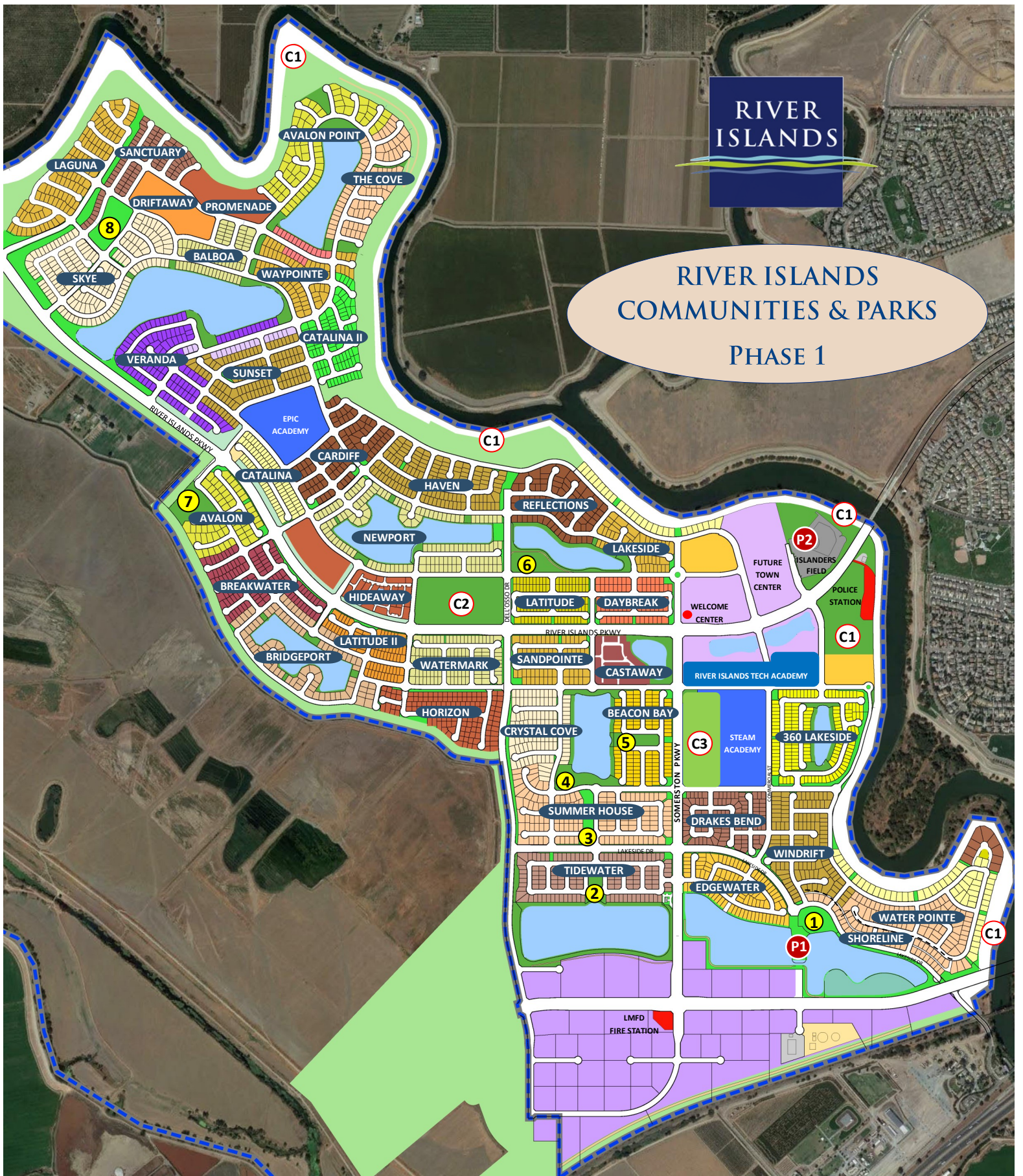


# RIVER ISLANDS

## RIVER ISLANDS COMMUNITIES & PARKS PHASE 1



### PARKS LEGEND

- ① MICHAEL VEGA PARK** — Playground, open turf field and drop in picnic area
- ② TIDEWATER PARK** — Dock, basketball court, playground, open turf field and drop in picnic area
- ③ SUMMER HOUSE PARK** — Drop in picnic area
- ④ CRYSTAL COVE PARK** — Youth baseball practice field, basketball court, dog park, drop in picnic area
- ⑤ SOMERSTON PARK** — Lawn area and playground
- ⑥ REFLECTIONS PARK** — Basketball court, sand volleyball court, playground, lake overlook and open turf field
- ⑦ NOTOTOMNE PARK** — (COMING SOON)  
Plans include a playground, drop in picnic area and open turf field
- ⑧ OLD RIVER NEIGHBORHOOD PARK** — (COMING SOON)  
Plans include open turf fields, a playground and basketball court
- ⓐ LATHROP LANDING COMMUNITY PARK** — (COMING SOON) Plans include basketball half courts, tennis courts, a public splash pad, parking lot and restrooms and river front trails on the Benny and Joyce Gatto Historical Park
- ⓑ CHAMPION FIELDS COMMUNITY PARK** — (UNDER CONSTRUCTION) Drop in picnic area, all-inclusive playground, baseball, softball and T-Ball fields, parking lot and restrooms
- ⓒ STEAM ACADEMY COMMUNITY PARK** — (COMING SOON) Plans include a playground, open turf fields, cricket pitch, parking lot and restrooms
- ⓐ1 SUNSET POINT (PRIVATE RECREATIONAL FACILITY)** — Sand volleyball, bocce ball, The Boathouse Restaurant and lake overlook
- ⓐ2 ISLANDERS FIELD (PRIVATE RECREATIONAL FACILITY)** — High school baseball field

This brochure is provided for general information only. Timing of construction and completion, plans, specifications, amenities and features are effective as to currently anticipated plans for development and are subject to change and modification. River Islands makes no representation or warranties regarding the River Islands community, the anticipated development of the project, amenities, market conditions and/or the marketability of any homes within the development. Renderings, site plans and maps are artist's conceptions and not to scale.

\*ALL PARKS ARE DEFERRED, CONCEPTUAL UNTIL FINAL APPROVAL OF DESIGN BY CITY COUNCIL

As of Date: July 1, 2022